

**CLEO marker**

Code : DT. BS2045-marker

CE IP67 CRI>90 SDCM<sup>3</sup>

## Description

In-ground robust marker light fixed. Dimmable, IP rated. Low glare. Great for pathway & orientation lighting in all external locations.

## Materials

Die-cast aluminium, Stainless steel 316S (marine grade)

## Colour finish

Brushed stainless steel or custom plated finish


**Cut-out (mm)** 64 mm (66mm with sleeve)

**Weight (KG)** 0.3

## Light Source

Option A. 7w GU10 LED 36° (545 lms) 240v

**CCT available** 2700K / 3000K / 4000K

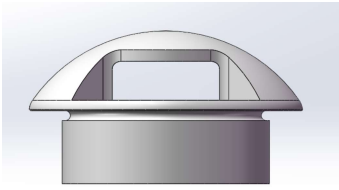
**Dimming:** Phase, 0-10v, DALI (remote). Casambi  allows dimming control of each fixture

## Special Notes:

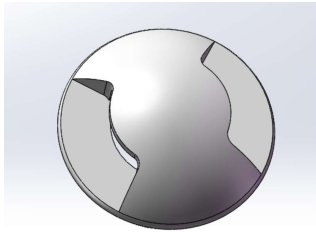
p.2 choose one-aperture or two-aperture cover

custom plated finishes subject to extra charge

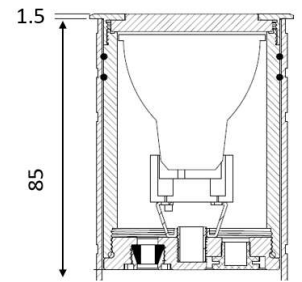
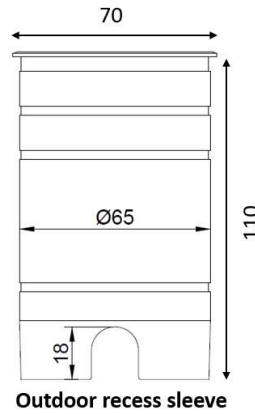
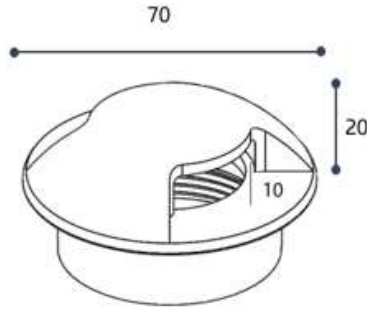




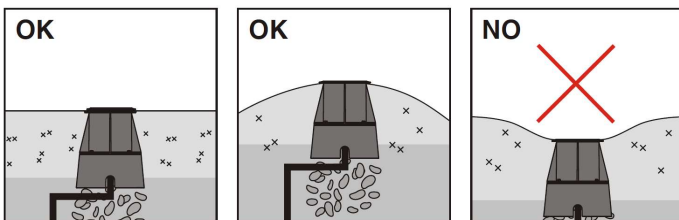
Cover one-aperture



Cover two-aperture



REDUCE CABLE SIZE IN ORDER TO MAKE SECURE CONNECTION



WARNINGS - all enclosures and fittings for external lights must be at least IP65 - allow adequate drainage around fittings.